

THE HISTORY OF HOLMBUSH HOUSE

CMG Archives,
<http://www.campbellmgold.com>

(2013)

--()--

After the Norman Conquest the Manor of "Beaubush" was given to the de Braose family by William the Conqueror, and they kept it as a deer park for the next 400 years.

In 1486 the Manor was given to Lord de la Warr by Henry VII, and it later passed to the Seymour family, and then to the Earls of Sandwich.

By the 18th Century there are records of a lodge on the estate, and in 1787 the whole estate was purchased by Lord Chancellor Erskine.

In 1824 a considerable part of the estate was sold to Thomas Broadwood, and in 1826 the foundation stone for Holmbush House was laid. The ensuing house was built with stone that was quarried on the estate.

The Broadwood family lived there until 1864 when the house changed hands twice in one year, and eventually came in to the ownership of Colonel James Clifton Brown, who was one time Liberal MP for Horsham. The property was the Clifton family home for 87 years.

From 1951 to 1976 the house was used as a hospital, and in 1977 it was a police training centre, until a serious fire destroyed part of the roof.

With the house being too large for one family, and expensive to run, it was sold to a group of families for conversion into five separate residences, which is its current configuration.

The Clifton family connection remains, as a grandson owns and lives in the Holmbush Estate.

--()--

HOLMBUSH HOUSE
FAYGATE, HORSHAM, WEST SUSSEX



East Wing Holmbush House



Holmbush House - East Wing



Holmbush House - East Wing



Holmbush House - East Wing



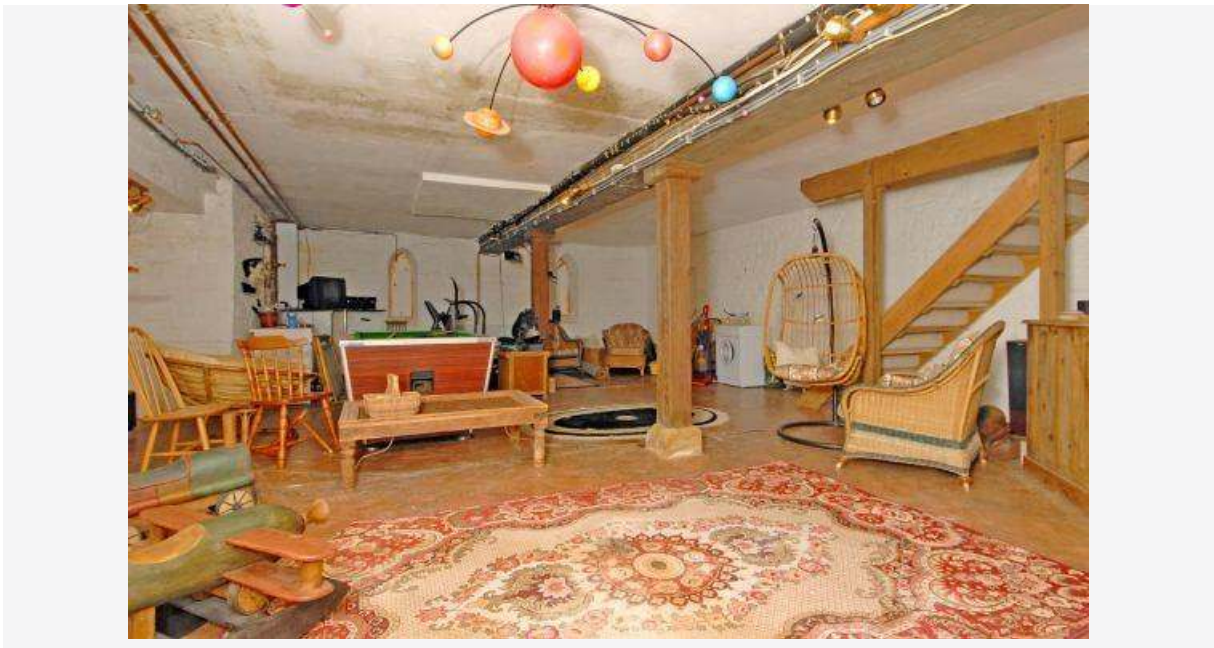
Holmbush House - East Wing Library



Holmbush House - East Wing



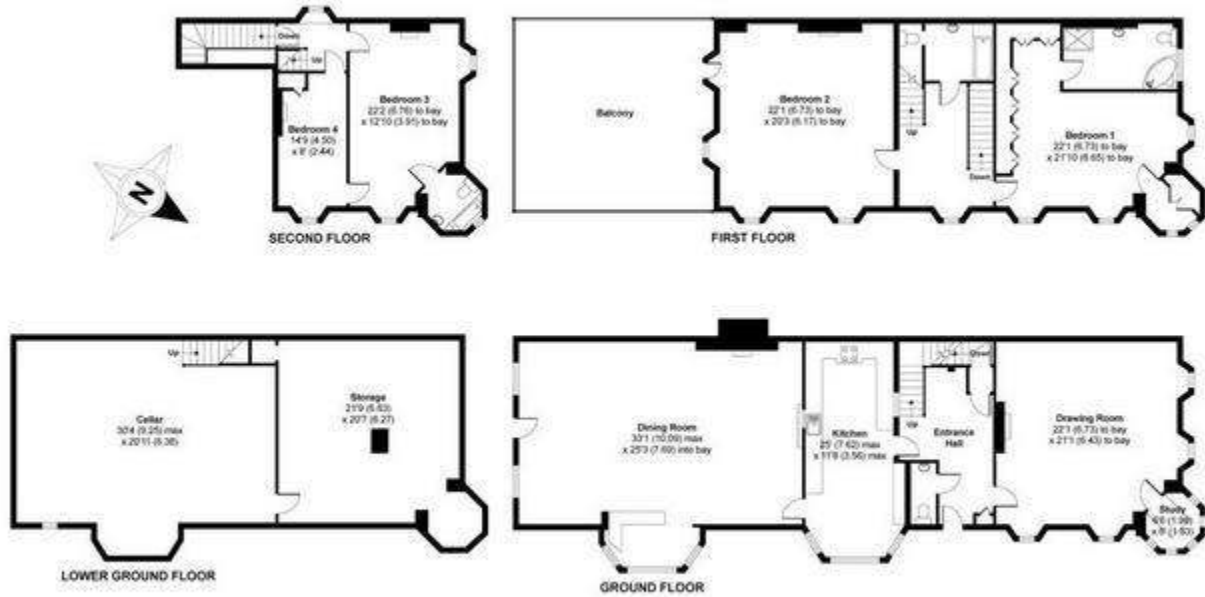
Holmbush House - East Wing



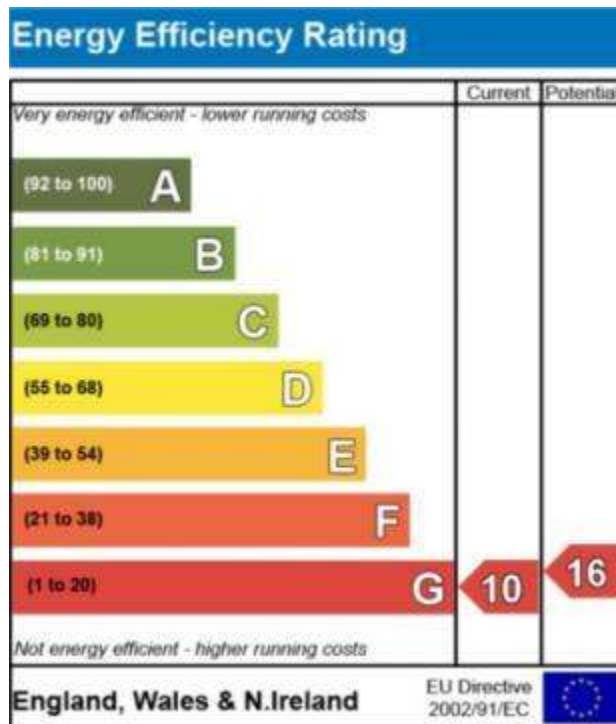
Holmbush House - East Wing

East Wing, Holmbush House, Faygate, Horsham, West Sussex, RH12

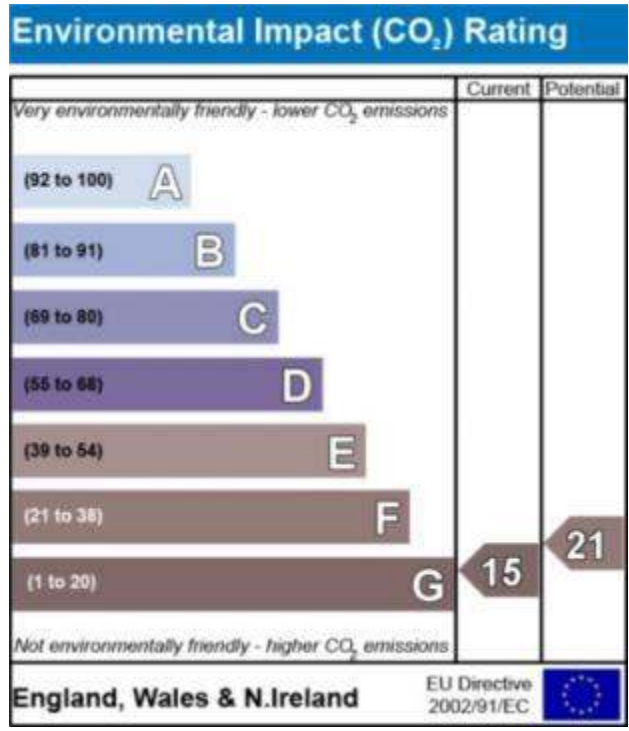
APPROX. GROSS INTERNAL FLOOR AREA 4673 SQFT / 434.1 SQM



Whilst every attempt has been made to ensure the accuracy of the floor plans contained here, measurements of doors, windows and rooms are approximate and no responsibility is taken for any error, omission or mis-statement. These plans are for representation purposes only as defined by RICS Code of Measuring Practice and should be used as such by any prospective purchaser. The services, systems and appliances listed in this specification have not been tested by Fine & Country East Sussex, Brighton & Hove and no guarantee as to their operating ability or their efficiency can be given.
 Copyright nichecom.co.uk 2010 Produced for Fine & Country East Sussex, Brighton & Hove REF : 92461



Holmbush House - East Wing



Holmbush House - East Wing

--()--



Middle Holmbush House



Middle Holmbush House



Middle Holmbush House



Middle Holmbush House



Middle Holmbush House



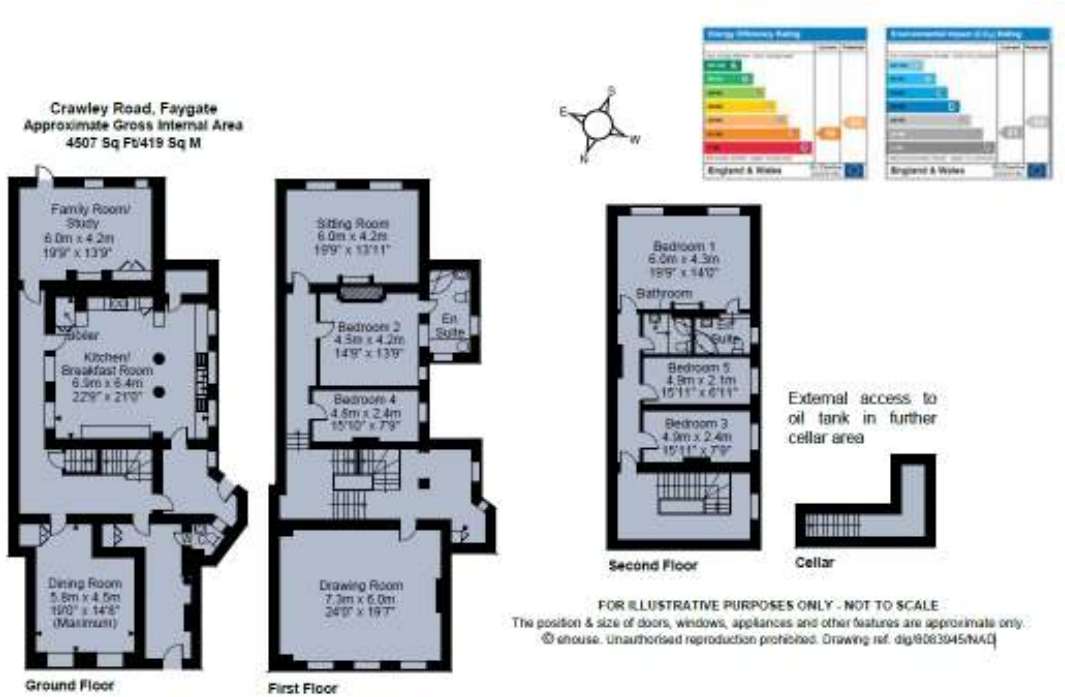
Middle Holmbush House



Middle Holmbush House



Middle Holmbush House



Middle Holmbush House

End

--()--

<http://www.campbellmgold.com>

14052013