

IRIDOLOGY

THE

SPLEEN

Compiled by

Campbell M Gold

(2008)

CMG Archives

<http://campbellmgold.com>

--()--

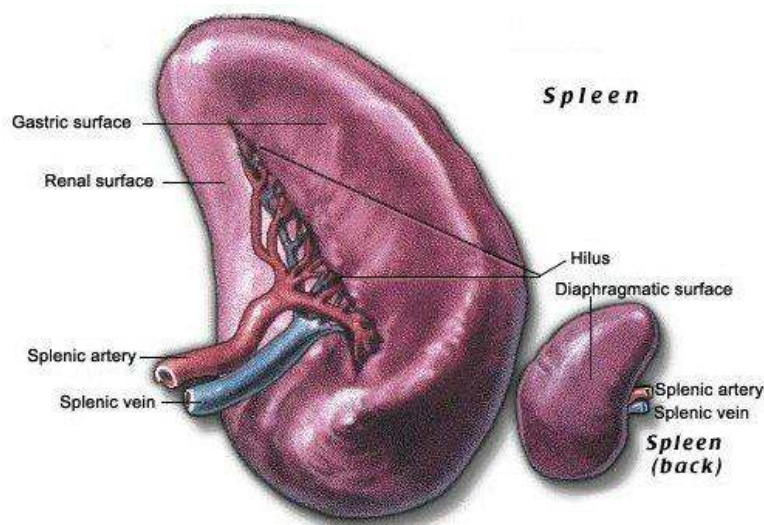
IMPORTANT

The health information contained herein is not meant as a substitute for advice from your physician, or other health professional. The following material is intended for general interest only; and it should not be used to diagnose, treat, or cure any condition whatever. If you are concerned about any health issue, symptom, or other indication, you should consult your regular physician, or other health professional. Consequently, the Author cannot accept responsibility for any individual who misuses the information contained in this material. Thus, the reader is solely responsible for all of the health information contained herein. However, every effort is made to ensure that the information in this material is accurate; but, the Author is not liable for any errors in content or presentation, which may appear herein.

--()--

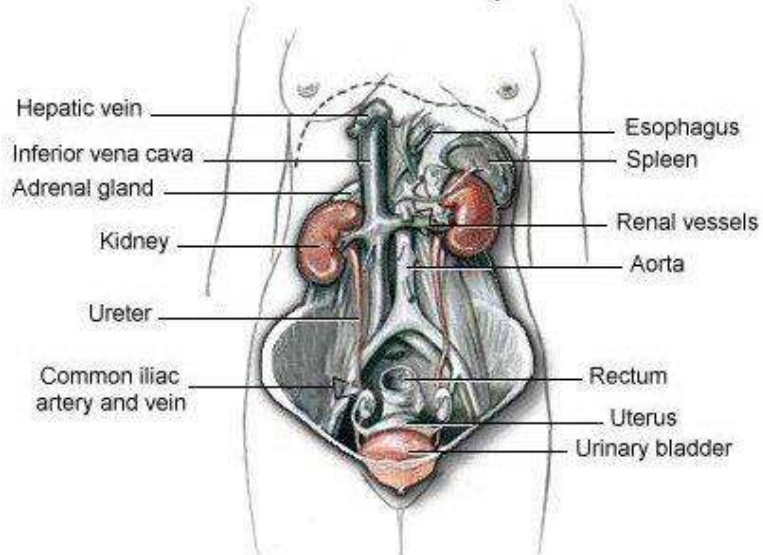
Introduction

The spleen is a soft, egg-shaped, organ filled with blood vessels, and is located between the stomach (it lies just behind the lower part of the stomach) and the diaphragm on the left half of the body. It contains lymphatic nodules. The spleen has a dark purple color and varies in shape in different individuals and within the same individual at different times.



The spleen's function is closely related to the cardiovascular and lymphatic systems, and is the only lymphatic organ responsible for filtering blood. It removes worn out blood cells from the bloodstream, converts their hemoglobin to bilirubin, and then releases their iron back into the bloodstream to be used in the manufacture of other blood cells. The size of the spleen becomes larger during and after, digestion, and often during illness. It can weigh as much as 9 kg in a victim of malarial fever.

Location of the Spleen



For indications of problems with the spleen, look in the eye area as indicated in red on the following diagrams (the spleen is noted in the left eye only):

See Below

